

Ropak 32 x 30 x 34 Heavy-Duty Collapsible Bulk Containers

PRODUCT INFORMATION

Part #: HDR323034-2

Product Category: Collapsible Bulk Containers

Related Products: DGR3230-L, 32x30 Dolly

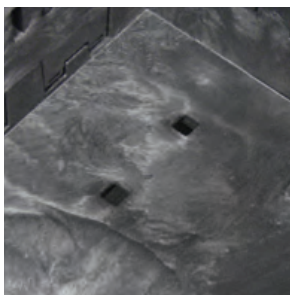
Industries: Automotive, Industrial



The 32" x 30" x 34" heavy-duty bulk containers are ideal for handling, storing, and moving various dense small-to-medium-sized parts. The 32" x 30" containers were originally designed by the automotive industry to fit three wide in a trailer, are reusable, and can handle heavy-duty loads, such as metal stampings and other dense components. Its collapsible design ensures easy storage when not in use and has a return ratio 1.8:1.

Exterior Height	34"	Static Loading	6
Exterior (L x W)	32"(L) 30"(W)	Dynamic Load Stack	4
Interior (L x W)	29.3"(L) 27.3"(W)	Drop Doors	2
Interior Height	27.4"	Door (H x W)	15.7" x 18"
Collapsed Height	13.2"	Fork Opening (Long)	3.4" x 10.2"
Internal Volume (cu.ft.)	12.9	Fork Opening (Short)	2.3" x 7.1"
Weight Capacity*(lbs.)	2,000*	Fork Lift Entry	4-way
Tare Weight (lbs.)	85.5	53' Trailer Load	189
Floor Type	Solid	53' Trailer Collapsed	480

FEATURES & BENEFITS



SOLID FLOOR

A solid floor bottom ensures small parts will not be lost and provides a smooth and even load surface.



INTERLOCKING WALLS

Interlocking sidewalls at the corner of the container ensure high load capacity and stability.



ERGONOMIC LATCHES

Ergonomic spring loaded latches provide a quick and reliable locking mechanism for both access doors and collapsing sidewalls.